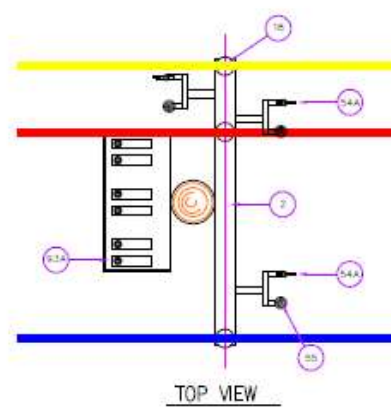
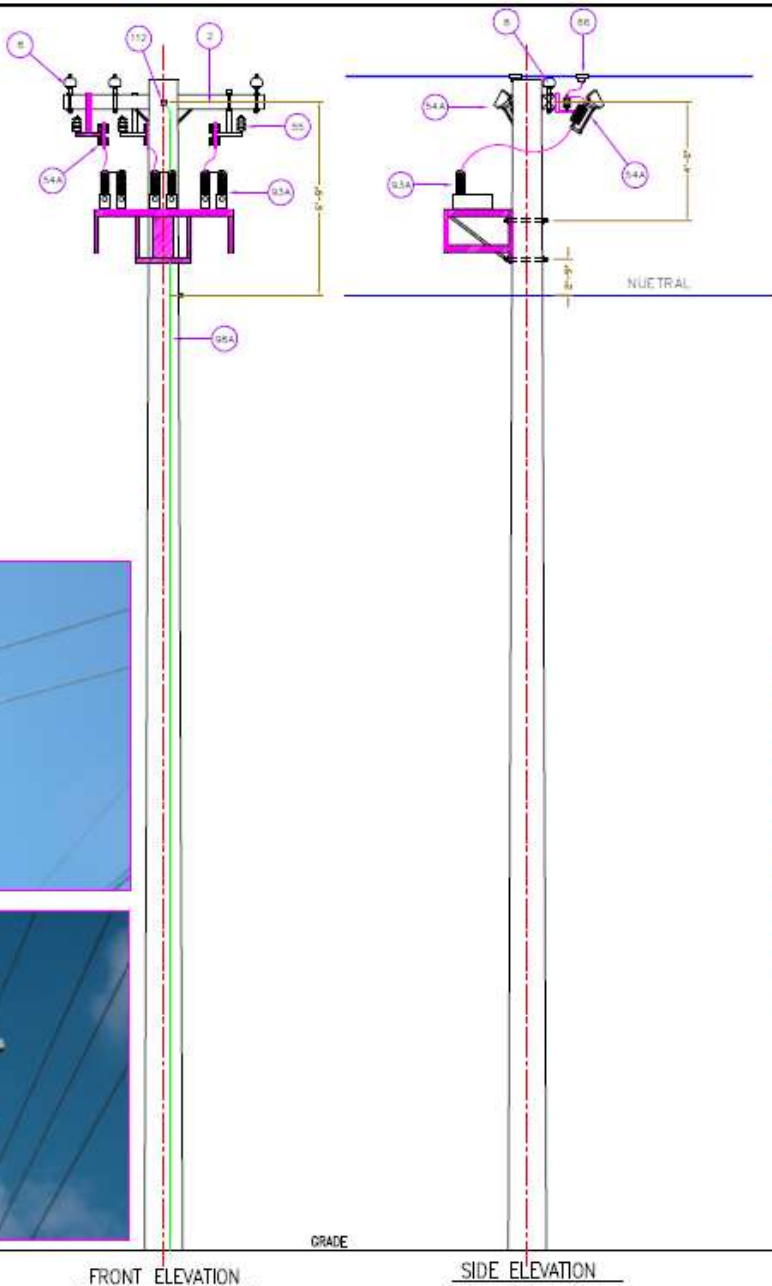


# SECTION 15

**REGULATORS, RECLOSERS  
& CAPACITORS**



ITEM	QUANTITY	ITEM DESCRIPTION	STOCK NO.
8	3	Fog Bowl Insulator	LIN-457-00001
28A	2	Washers Flat 5/8"	LIN-973-00008
31	1	D Clevis	LIN-185-00002
13	1	Spool Insulator	LIN-457-00008
16C	2	Bolt, Machine 5/8"x12"	LIN-098-00015
7	3	Straight X-Arm Pins	LIN-613-00005
66	3	Clamp, Ball 1/0-477	LIN-183-00001
68	3	Clamp, Tap	LIN-183-00006
98A	20'	#4 Cu	LIN-983-00010
54A	3	Cutout Switches	LIN-264-0002N
55	3	Arrester, 9KV Polymeric	LIN-037-00001
2	1	Crossarm, Wood Treated	LIN-255-00001
21	2	Bolt, Carriage 3/8"x5"	LIN-098-00002
3	2	Brace, Crossarm Fiber	LIN-107-00001
23	6	Eye Nuts, 5/8"	LIN-565-00002
29A	2	Lock Washers, 3/4"	LIN-973-00017
112	1	Ground Clips	LIN-188-00003
78A	1	Crimpfit, CU #6	LIN-253-00005
26	2	Screw Lag, 1/4"x4"	LIN-744-00002
93A		Capacitor	

NOTES:  
 Fuse Sizes - 600KVAR - 50T  
 Fuse Sizes - 300KVAR - 30T

All information contained within this drawing is the exclusive property of Caribbean Utilities Company Ltd. This drawing must NOT be reproduced or distributed to outside parties without the consent of Caribbean Utilities Company Ltd. By using this drawing the user agrees to abide by these governing terms and conditions.

CONSULTANTS

CONSTRUCTION	
DATE	REVISION

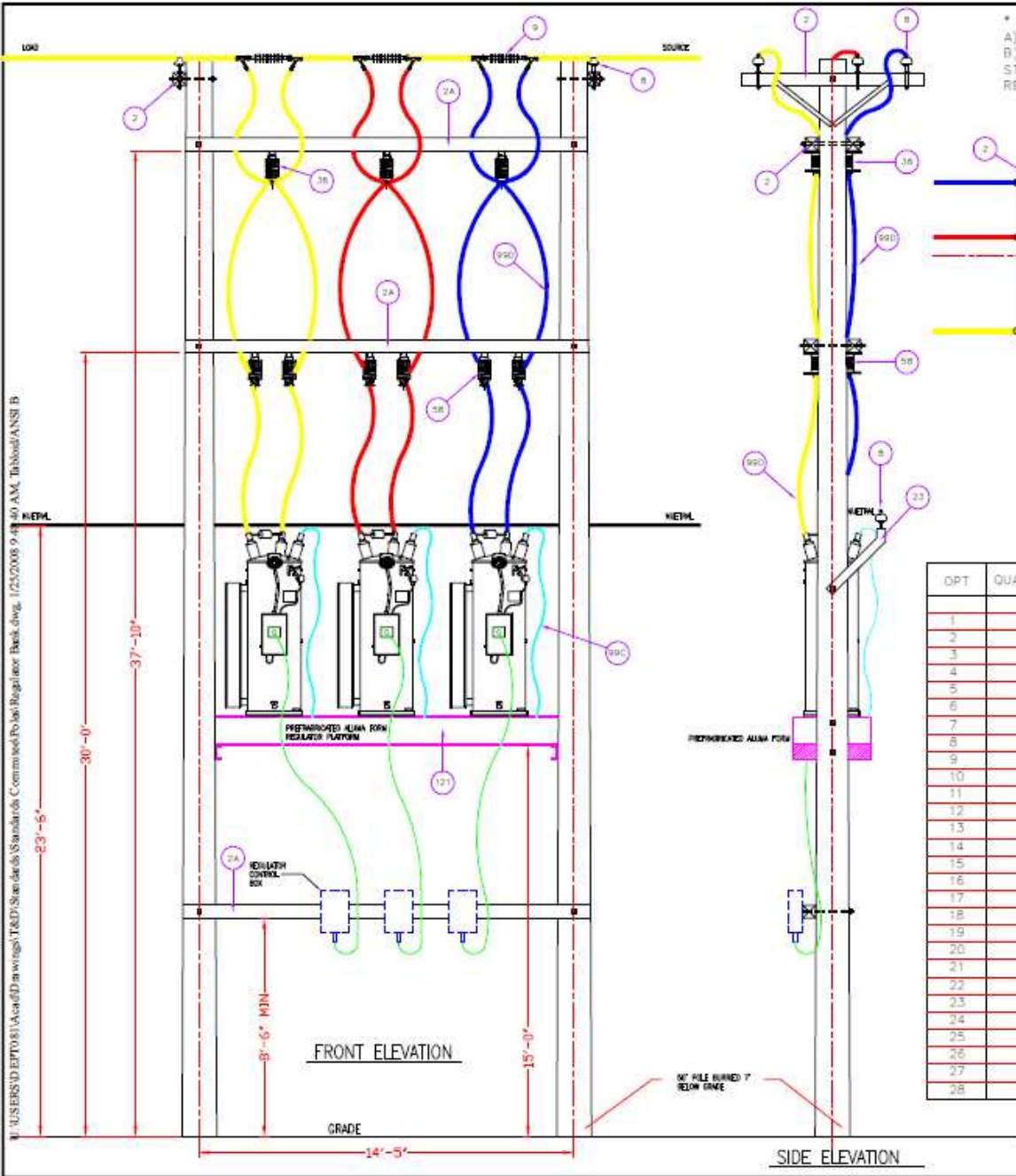
PROJECT  
**CUC STANDARDS**

DRAWN BY  
**CAPACITOR BANK STRUCTURE**

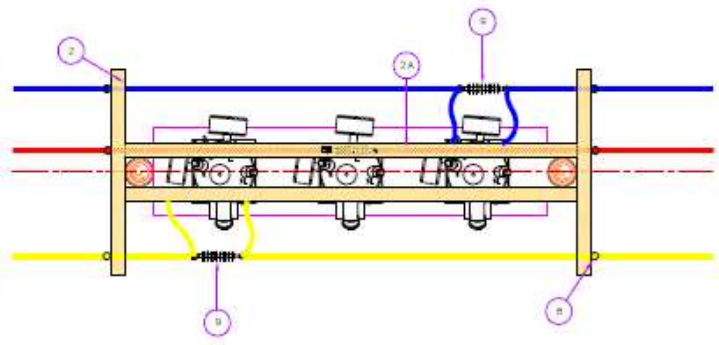
DATE	12/17/18
SCALE	AS SHOWN
DRAWN BY	ME
CHECKED BY	SPICER/OSANTON
APPROVED BY	SPICER/OSANTON

PROJECT # \_\_\_\_\_  
 SHEET # \_\_\_\_\_  
 DRAWING # **L-1**  
 REV # \_\_\_\_\_

**CARIBBEAN UTILITIES COMPANY, LTD.**  
 427 North Second St.  
 P.O. Box 10102, Grand Cayman, Cayman Islands, BVI  
 Telephone: (1-473-340-3300/3330)  
 Fax Number: (1-473-340-3111/3121), P.O. Box 848-3300  
 Email: [SpicB@cu-companies.com](mailto:SpicB@cu-companies.com)  
[www.cu-companies.com](http://www.cu-companies.com)



\* NOTES:  
 A) ARRESTERS (2 SPANS FROM STRUCTURE) HEM AT  
 B) WHEN BYPASS SWITCHES ARE DEPLETED FROM STORES  
 STOCK, EV SWITCHES TO BE USED IN THEIR PLACE (ITEM #58  
 REPLACED WITH ITEM #36)



OPT	QUANTITY	ITEM DESCRIPTION	STOCK NO.	ITEM
1	4	Bolt, Machine 3/4" x 16"	098-00011	17C
2	8	Washer, Sq. 3/4" Flat	973-00004	27A
3	6	Bolt, Machine 5/8 x 16	098-00017	16E
4	4	Washer - Double Coil 3/4"	973-00012	30
5	20	Washer, Square 5/8"	973-00005	27
6	12	Washer - Double Coil 5/8"	973-00011	29
7	50	Wire, 4/0 Copper PVC THHN	983-00004	99C
8	180	Clamp, Bolt 1/0-477	183-00001	66
9	70	Wire Insulated, 500MCM	983-00005	99D
10	3	Connector, Trmr Grd.	213-00010	72
11	4	Connector, Two Bolt 2/0-4/0	213-00012	88A
12	6	Arrester, 9 KV Polymenc	850-00004	91
13	3	**Switch, Bypass 3 WAY**	255-00005	58
14	1	Platform Alum Form	098-00002	121
15	2	Crossarm, Wood, Treated	613-00002	7
16	5	Crossarm, 16" x 4" x 8"	457-00001	2A
17	4	Bolt, Carriage 3/8" x 5"	457-00007	21
18	4	Brace, Crossarm Fiber	183-00003	3
19	6	Pin, Crossarm, Steel	035-00003	11
20	8	Insulator, Fogbowl, 15KV	850-00001	8
21	3	Insulator, Polymer dist.	785-00010	9
22	6	Clamp, Deadend 4/0 - 477	183-00017	51B
23	2	Arm-Standoff, Fiberglass	744-00002	11B
24	3	**Line Disconnect EV Switches**	098-00011	36
25	4	Bolt, DA 5/8 x 22	098-00011	18B
26	2	Sleeve-Service Entrance 4/0-4/0	098-00011	82L
27	6	Connector, Tap	098-00011	63
28	2	Screw Lag, 1/4 x 4	098-00011	26

All information contained within this drawing is the exclusive property of Caribbean Utilities Company Ltd. This drawing must not be reproduced or distributed to outside parties without the consent of Caribbean Utilities Company Ltd. By using this drawing the user agrees to abide by these proprietary terms and conditions.

CONSULTANTS

CONSTRUCTION	
NO.	REVISION

PRODUCT  
**CUC STANDARDS**

DRAWING  
**REGULATOR STRUCTURE  
 PLANS & DETAILS**

DATE:	12/07/2010
SCALE:	AS SHOWN
DRAWN BY:	DC
CHECKED BY:	
APPROVED BY:	

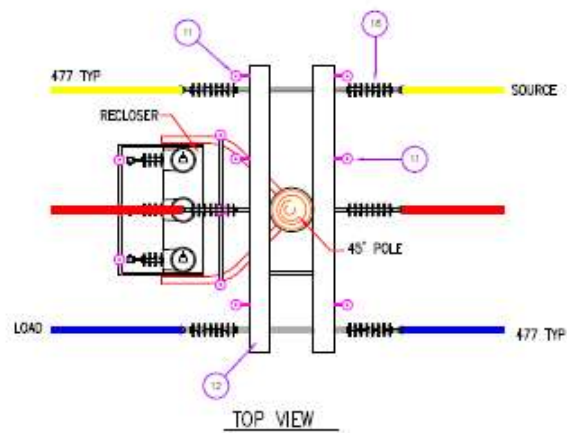
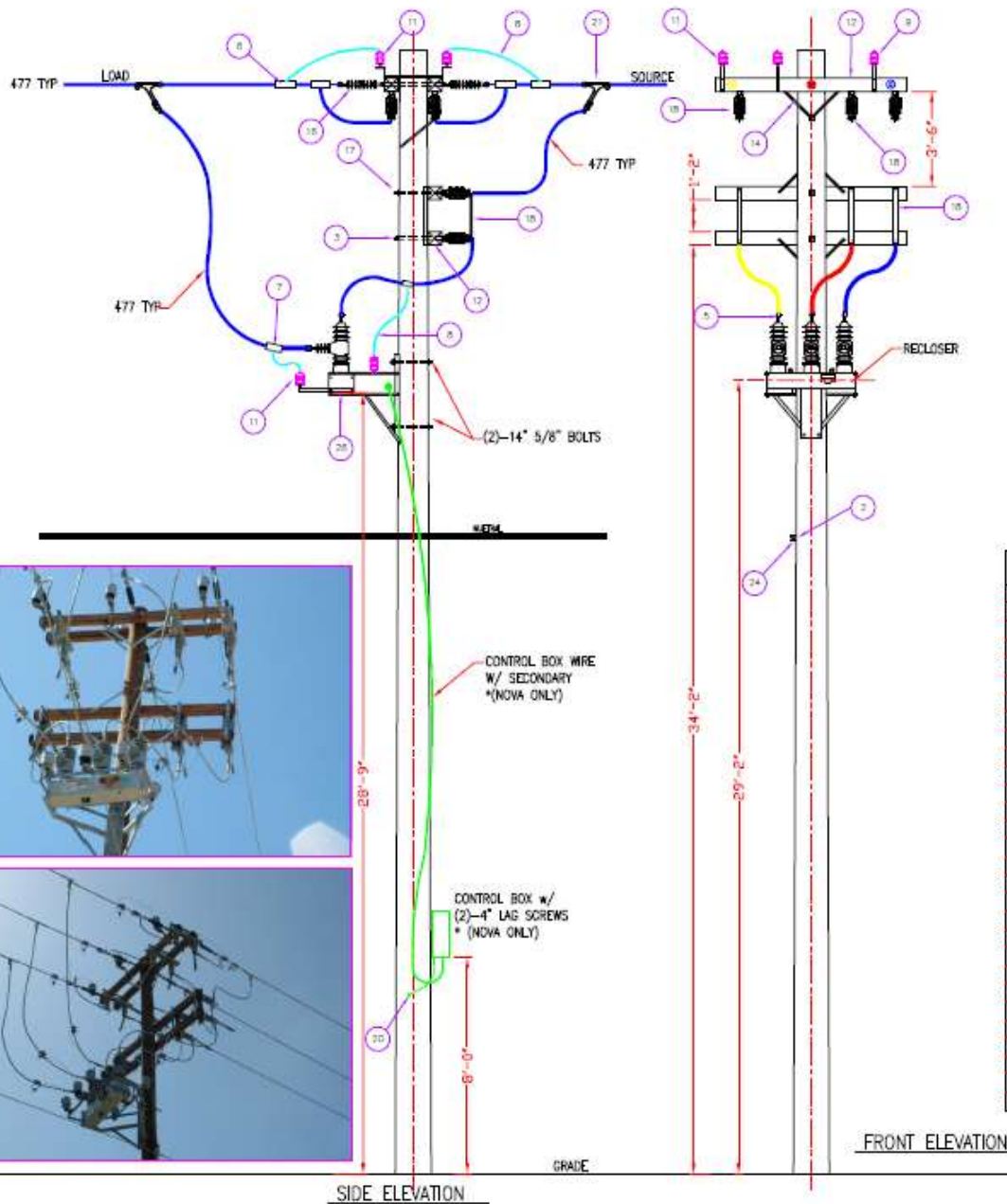
PROJECT # \_\_\_\_\_ SHEET # \_\_\_\_\_  
 DRAWING # **R-1**      REV #

**CARIBBEAN UTILITIES COMPANY, LTD.**  
 427 North Canal Rd.  
 P.O. Box 82127, Grand Cayman, Cayman Islands, KYR2  
 Telephone: (345) 949-3300/3328  
 Facsimile: (345) 949-4402, (345) 949-2200  
 Email: [cust@caribbeanutilities.com](mailto:cust@caribbeanutilities.com)  
[www.cuc.com.ky](http://www.cuc.com.ky)

I:\USERS\DEPT081\Acad\Drawings\T&E\Standards\Standards Commenced To Use\Regulator\_Bank.dwg, 1/25/2008 9:40 AM, Tab:Sheet/ANSI B



U:\USERS\DJ\EP1081\Acad\Drawings\TK&D\Structure Standards\Committed\Nova Recloser.dwg, 4/20/2009 9:44:39 AM, Tabload/ANSIB



ITEM	QUANTITY	ITEM DESCRIPTION	STOCK NO.
1	14	Washers Flat 5/8"	LIN-973-00005
2	1	D Clevis	LIN-185-00002
3	1	Bolt, Machine 5/8"x16"	LIN-457-00008
4	2	Bolt, 12"x 5/8"	LIN-098-00017
5	18	2 Hole Bursdy Lug 477	LIN-879-00001
6	12	Clamp, Bail 1/0-477	LIN-183-00001
7	12	Clamp, Top	LIN-183-00006
8	15	#4 Cu	LIN-983-00010
9	12	Frog Guards	LIN-411-00002
10	2	Bolts, 14"x5/8"	LIN-098-00016
11	12	Arrester, 3kV Polymeric	LIN-037-00001
12	4	Crossarm, Wood, Treated	LIN-255-00001
13	8	Bolt, Carriage 3/8"x5"	LIN-098-00002
14	8	Brace, Crossarm Fiber	LIN-107-00001
15	6	Eye Nuts, 5/8"	LIN-565-00002
16	6	Insulator, Polymer dist.	LIN-457-00007
17	3	Ground Clips	LIN-188-00002
18	6	Line Disconnect EV Switches	LIN-850-00001
19	3	Bolt, DA 5/8"x22"	LIN-098-00004
20	2	Crimpfit, CU #4	LIN-253-00005
21	6	Connector, Top - 477	LIN-183-00017
22	6	Screw Lag, 1/4" x 4"	LIN-744-00002
23	10	5/8" Lock Washer	LIN-973-00011
24	1	Spool Insulator	
25	1	45° Pole	
26	1	Recloser	

All information contained within this drawing is the exclusive property of Caribbean Utilities Company Ltd. This drawing must NOT be reproduced or distributed to outside parties without the consent of Caribbean Utilities Company Ltd. By using this drawing the user agrees to abide by their foregoing terms and conditions.

CONSULTANTS

**CONSTRUCTION**

REV	REASON
1	ISSUED FOR CONSTRUCTION

**PROJECT CUC STANDARDS**

DRAWN BY: VACUM DAS 15 OR NOVA  
STRUCTURE PLANS & DETAILS

DATE:	JANUARY 2009
NO.:	ANSIB
DRAWN BY:	DC
CHECKED BY:	STANISLAW CROMBIE
APPROVED BY:	STANISLAW CROMBIE-007218

PROJECT: \_\_\_\_\_  
SHEET: \_\_\_\_\_  
DRAWING: R-1  
REV: \_\_\_\_\_



**CARIBBEAN UTILITIES COMPANY, LTD.**  
457 South Street Rd.  
P.O. Box 28 G.T., Grand Cayman, Cayman Islands, B.W.I.  
Telephone: (941) 943-2300  
Facsimile: (941) 943-2422, (941) 944-0021, (941) 944-0022  
Email: [cust@caribbean-utilities.com](mailto:cust@caribbean-utilities.com)  
Web: [www.caribbean-utilities.com](http://www.caribbean-utilities.com)